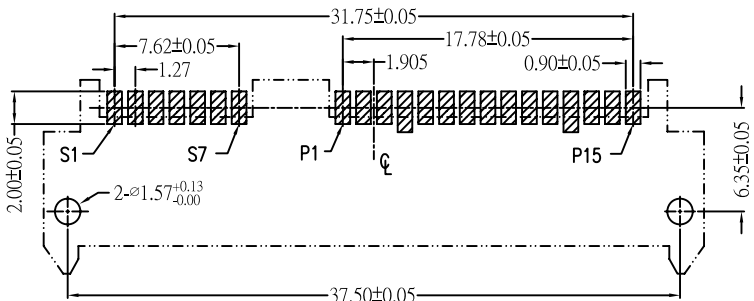
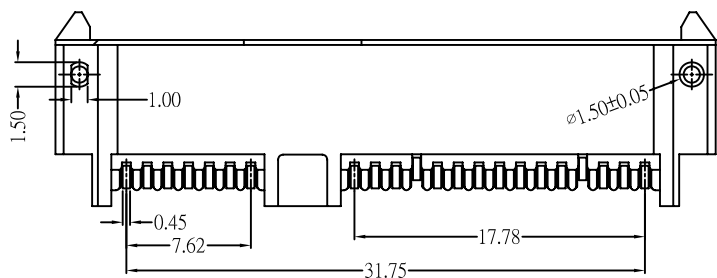
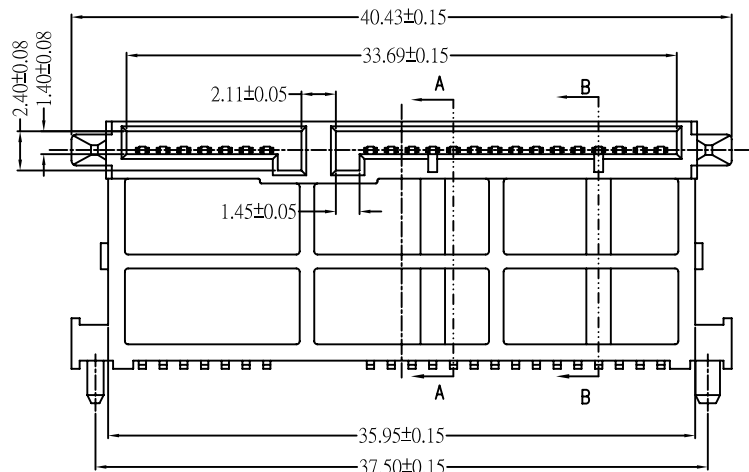
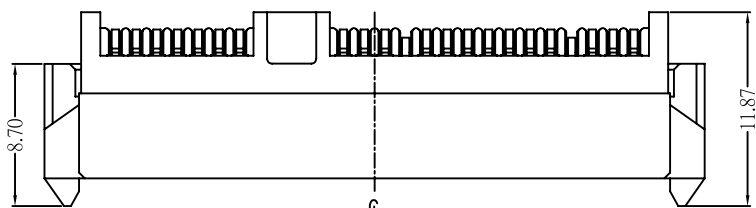
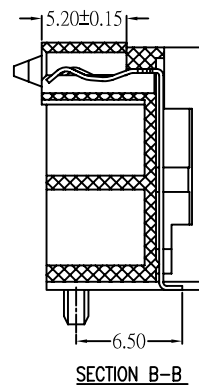
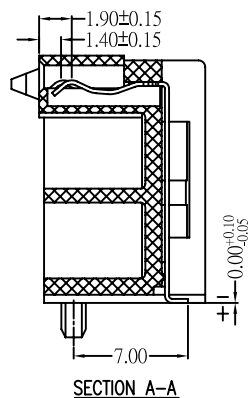
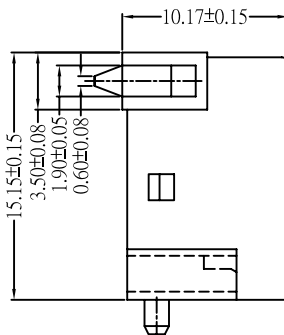


DATE	DR.BY	ECN.NO.	DESCRIPTION	MARK	VER.
17.03.29			NEW DWG		AO



PCB LAYOUT
TOP VIEW (T=1.60mm)



Notes:

*Material

Housing: LCP, UL 94V-0 rated;

Color: Black.

Contact: Phosphor Bronze

Plating: Gold Plating over Nickel on contact area
Tin plating on solder Tail.

*Mechanical

Insertion Force: 45N max.

Withdrawal Force: 10N min.

Durability: 500 cycles

*Electrical Specification

Current Rating: 1.5 Ampere per contact

Contact Resistance: 30 Milliohms max.

Insulation Resistance: 1000 Megohms min.

Dielectric Withstanding Voltage: 500 VAC

*Environmental

Operating Temperature: -55°C to +85°C

Signal Segment	
Name	Type
S1	GND
S2	A+
S3	A-
S4	GND
S5	B-
S6	B+
S7	GND

Power Segment			
Name	Type	Name	Type
P1	V33	P9	V5
P2	V33	P10	GND
P3	V33	P11	DAS/DSS
P4	GND	P12	GND
P5	GND	P13	V12
P6	GND	P14	V12
P7	V5	P15	V12

-TOLERANCES- UNLESS OTHERWISE SPECIFIED 公差参考表				东莞市龙科电子科技有限公司 DONGGUAN LONGKE ELECTRONICS CO.,LTD.: TITLE: SATA 7+15 SMT 加高型 产品品名:					
				PRODUCT NO: 230-M2236030-B44 产品料号:					
X.X	±0.30	X.X°	±3.00°	APPD: 核准:	DATE SCALE UNIT TYPE PAGE				
X.XX	±0.15	X.XX°	±1.00°	CHECK:dd 校对:	2017.03.29	1:1	mm	CD	1/1
X.XXX	±0.05	X.XXX°	±0.500°	DRAW: 绘图: 罗求新					