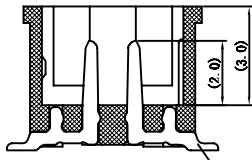
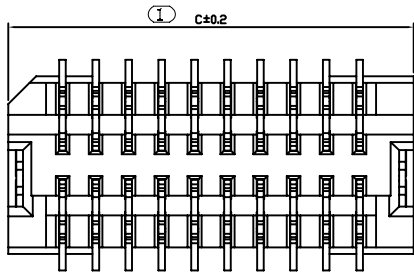
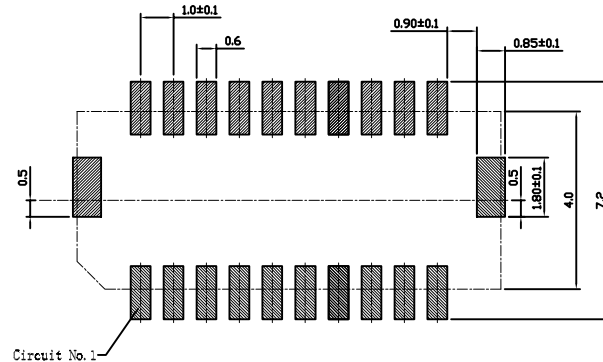


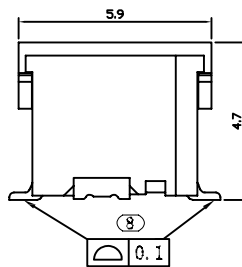
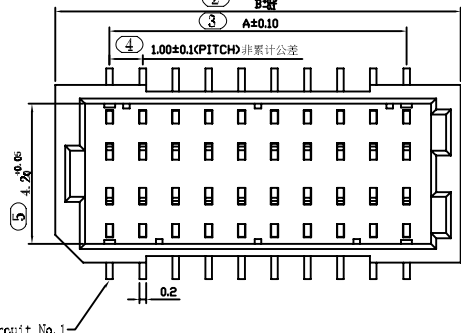
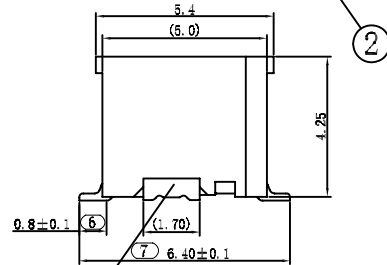
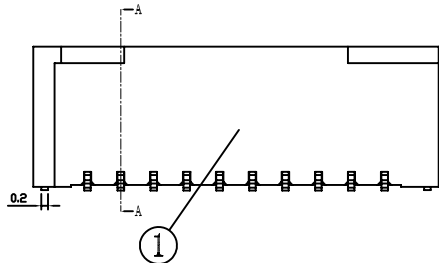
DATE	DR.BY	ECN.NO.	DESCRIPTION	MARK	VER.
3/29'16			NEW DWG		AO



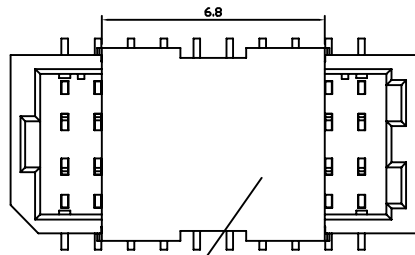
剖面 A-A



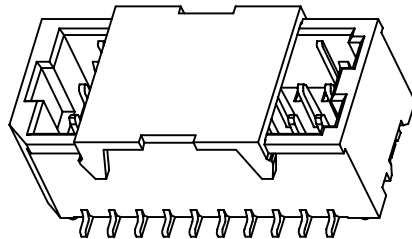
PCB寸法
PCB Layout



Circuit No.1



SHD-2pinAB 适合CAP
插带专用



NOTES:

- MATERIAL SEE TABLE;
- PLATING SEE TABLE;
- RATING
- 3-1. OPERATING TEMPERATURE:-25~85°C
- 3-2. OPERATING VOLTAGE: 50V AC/DC
- 3-3. CURRENT RATING: 1AMPS(28#)
- 3-4. DIELECTRIC WITHSTANDING VOLTAGE: 500V AC/Minute;
- 3-5. INSULATION RESISTANCE:100MΩ Min;
- 3-6. CONTACT RESISTANCE:0.03Ω Max;

孔位 poles	A	B	C
12	5	6.5	8.3
16	7	8.5	10.3
20	9	10.5	12.3
30	14	15.5	17.3
40	19	20.5	22.3
50	24	25.5	27.3

序号	图号	名称	材料	数量	附注
4	152-1015-001	盖子 CAP	PA9T(UL94V-0)	1	本色
3	122-1015-001	焊片 Fitting Nail	磷青铜 Phosphor Bronze	2	电镀(金): 整个表面镀底镍30u"MIN,再镀金Gold Flas
2	112-1015-001	端子 Contact	磷青铜 Phosphor Bronze	n×1	电镀(金): 整个表面镀底镍30u"MIN,再镀金Gold Flas
1	132-1015-001	基板 Wafer	PA9T(UL94V-0)	1	本色

-TOLERANCES- UNLESS OTHERWISE SPECIFIED 公差参考表				东莞市龙科电子科技有限公司 DONGGUAN LONGKE ELECTRONICS CO.,LTD.:					
				TITLE: 1.0PH WTB CONN.SMT 产品品名:					
X.X	±0.25	X.X°	±3.00°	APPD: 核准:	PRODUCT NO: 产品料号: 201-MXX34230-B44				
X.XX	±0.20	X.XX°	±1.00°	CHECK:dd 校对:	DATE	SCALE	UNIT	TYPE	PAGE
X.XXX	±0.10	X.XXX°	±0.500°	DRAW: 绘图: 罗求新	2016.03.29	1:1	mm	CD	1/2