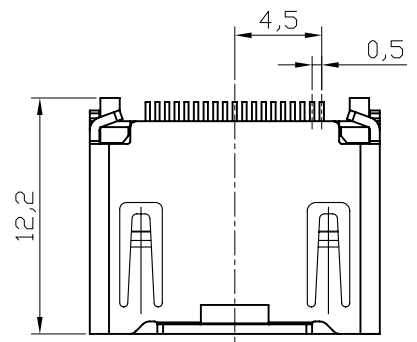
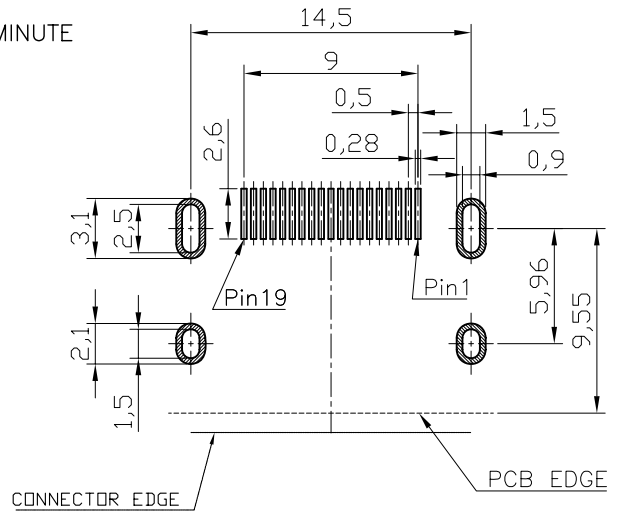
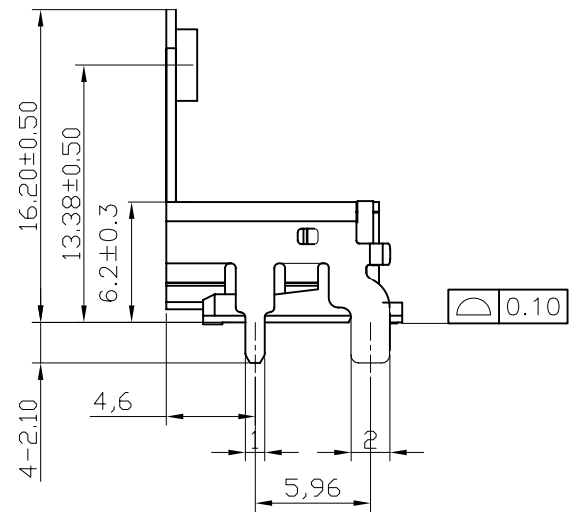
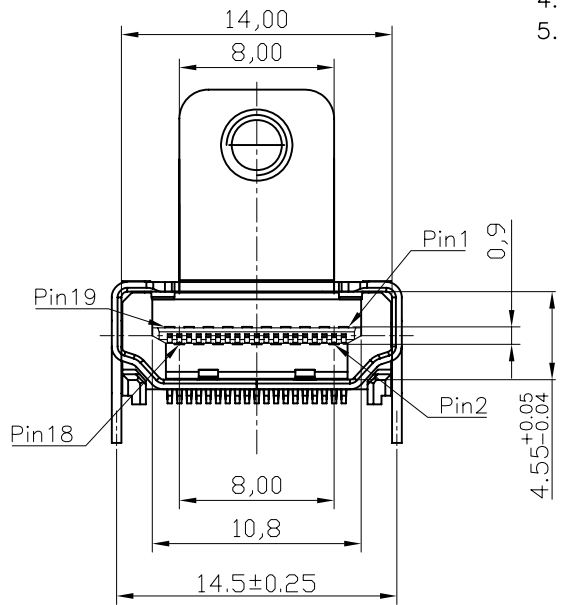


DATE	DR.BY	ECN.NO.	DESCRIPTION	MARK	VER.
3/29'16			NEW DWG		A0



SPECIFICATIONS:

- ELECTRICAL CHARACTERISTICS
 - CURRENT RATING: 0.5 AMP
 - VOLTAGE RATING: 40 V
 - CONTACT RESISTANCE: 30MILLIOHMS MAX
 - INSULATION RESISTTANCE:100M MIN.@500V DC
 - DIELECTRIC WITHSTANDING VOLTAGE: 500V AC FOR 1 MINUTE
- MECHANICAL CHARACTERISTICS:
 - INSERTION FORCE : 4.5KGF MAX.
 - WITHDRAWING FORCE : 1KGF ~ 4KGF.
- LIFE TEST: 10000 CYCLES
- OPERATING TEMPERATURE: -25°C TO +85°C
- PART NO. DESCRIPTION:



RECOMMENDED PCB LAYOUT (TOP VIEW)

TOLERANCE: ±0.05mm

C	SHELL	1	C2680R-H Ni 50u" T=0.5mm PLATING ALL OVER
B	TERMINAL	19	C2680R-H SEE PART NO.
A	HOUSING	1	LCP E130i UL94V-0 BLACK
NO	PART NAME	QTY	MATERIAL PLATING & COLOR

-TOLERANCES- UNLESS OTHERWISE SPECIFIED 公差参考表		东莞市龙科电子科技有限公司 DONGGUAN LONGKE ELECTRONICS CO.,LTD :					
X.X ±0.25	X.X° ±3.00°	APPD: 核准:	TITLE: 产品品名: HDMI 19PIN SMT型 带螺丝扣 PRODUCT NO: 产品料号: 111-F193GR30-B57				
X.XX ±0.20	X.XX° ±1.00°	CHECK:dd 校对:	DATE	SCALE	UNIT	TYPE	PAGE
X.XXX ±0.10	X.XXX° ±0.500°	DRAW: 绘图: 罗求新	2016.03.29	1:1	mm	CD	1/1