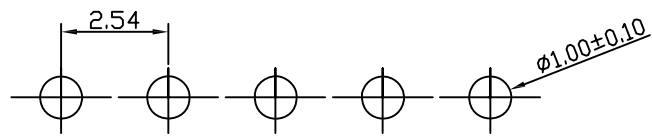
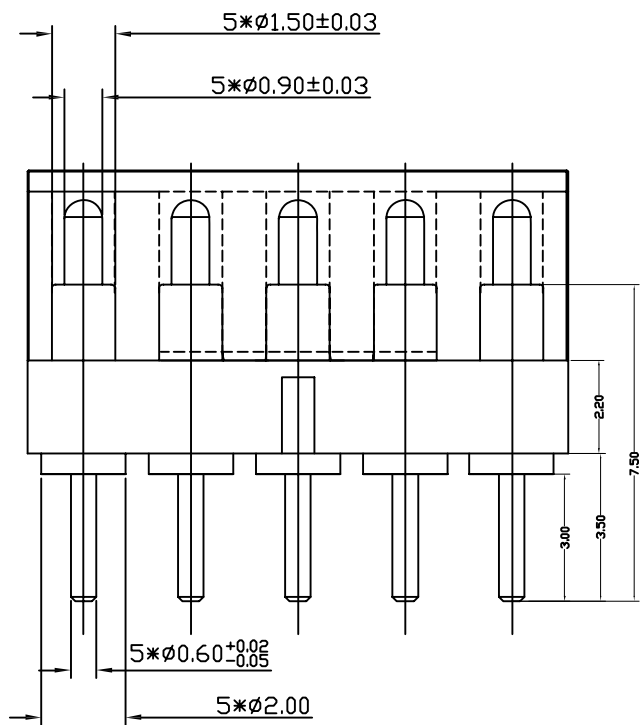
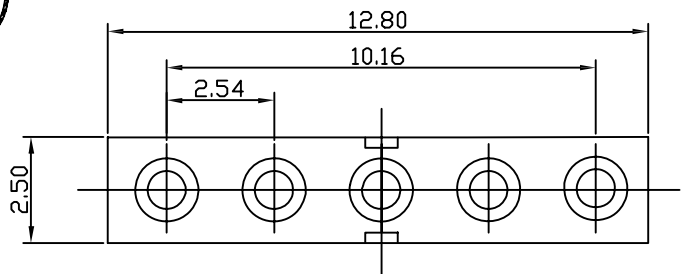
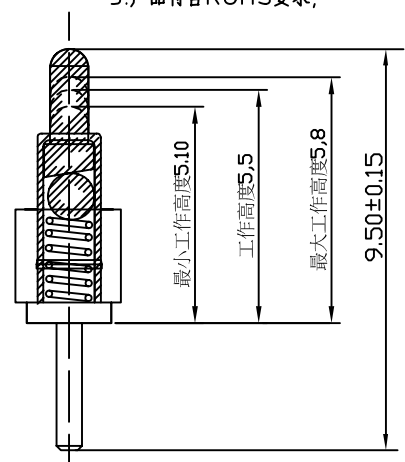
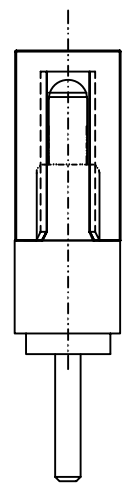


DATE	DR.BY	ECN.NO.	DESCRIPTION	MARK	VER.
3/29'16			NEW DWG		AO



PCB LAYOUT



技术要求:

1.材质:

- 外管 黄铜3604 外壁镀金5u"min,50u" - 100u"全部镀底
- 外管 黄铜3604 内壁镀金2u"min,50u" - 100u"全部镀底
- 针轴 黄铜3604 镀金5u"min,50u" - 100u"全部镀底
- 弹簧 SWP-B 镀金1u"min,50u" - 100u"全部镀底
- 圆珠 SUS304 镀金1u"min,50u" - 100u"全部镀底
- 塑胶 PA46 UL94V-0

2.电性能:

- 3.1 额定电压&电流:12VDC ,2.0A
- 3.2 接触电阻:100毫欧Max.,压缩1.1mm;

3.机械性能

- 4.1 弹力:150gf±20g Min.,压缩:1.0mm;
- 4.2 机械寿命:10000次;

- 4. 标示有"□"符号的为重点控制和检验尺寸;
- 5. 产品符合ROHS要求;

-TOLERANCES- UNLESS OTHERWISE SPECIFIED 公差参考表		东莞市龙科电子科技有限公司 DONGGUAN LONGKE ELECTRONICS CO.,LTD :	
		TITLE: POGO PIN 立式1*5 产品品名:	
X.X ±0.30	X.X° ±3.00°	APPD: 核准:	PRODUCT NO: 产品料号: 251-M051G053-B69
X.XX ±0.15	X.XX° ±1.00°	CHECK:dd 校对:	DATE SCALE UNIT TYPE PAGE
X.XXX ±0.05	X.XXX° ±0.500°	DRAW: 绘图: 罗求新	2016.03.29 1:1 mm CD 1/1